



PECO
food & beverage

CRYOTECH INERTER

High Volume Liquid Nitrogen Dosing For Oxygen Reduction Applications



Cryotech Inserter:

The Inserter is a high volume LN2 dosing system for full container and headspace inerting applications designed to meet ultra-low O2 specifications in the food and beverage industry.



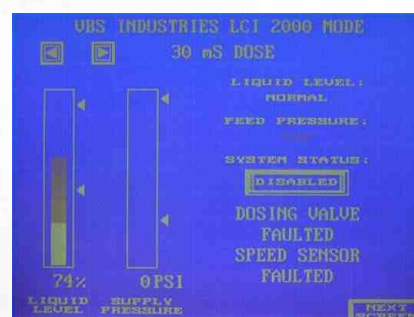
The Inserter can be installed before the filler for an empty container purge (such as beer applications) or after filling for full container purge and headspace purging (such as wine, salad dressing, juice, nuts, coffee etc.). Once the Inserter dispenses LN2 in to the container, it immediately picks up heat and turns into gaseous nitrogen, expanding 700 times in the process. The rapidly expanding gas is allowed to escape before the product is sealed, flushing oxygen out of the container.

System Features:

- Fed by a triaxial pipe from a Cryotech Phase Separator (LN2 holding tank)
- Easily integrated into new or existing filling lines.
- Accurate, precise high volume dosing.
- Reliable performance.
- No container/no dose feature.
- Sealed vacuum insulation - no vacuum pump required.
- Slim profile dosing head.
- Self-generated GN2 purge at dosing head to minimize moisture intrusion.
- Self-regulating heaters designed for longevity.
- Distribution panel to track performance of each electrical component.
- Minimal utility requirements.

Controller Features:

- Easy to use touch screen controller requires minimal training.
- Multi Lingual Support (Siemens option only).
- 'True' speed compensation – system will adjust dose volume dependant on line speed.
- Single button to control dose size.
- Volt free alarm outputs for integration in to line controls.
- NEMA 4X / IP 65



www.peco-europe.com

INERTER SPECIFICATIONS

Material:	Stainless Steel Series 300
UltraDoser Weight:	3.6 kg (8 lbs)
Dosing Specifications:	Min 0.05 g – Max 100 g/sec
Certifications:	NEMA 4X IP 65 CE

Maximum Line Speed:	51,000 / hour
Accuracy:	+/- 5% of dose volume
Controller:	Siemens S7 Series / Allen Bradley

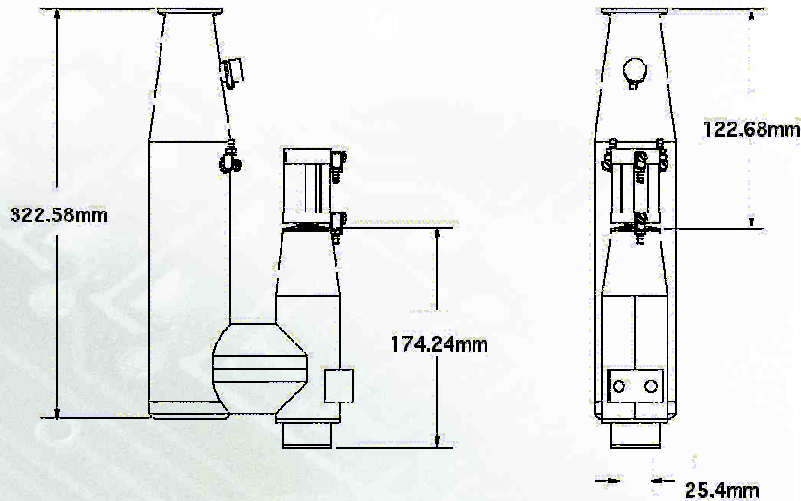
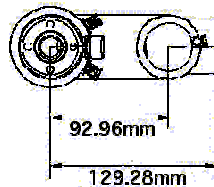
System Utilities:

Liquid Nitrogen:	0.2 - 1.5 BAR (3 -22 psig) (10 micron filter provided)
Gaseous Nitrogen:	4.1 - 6.8 BAR (60 -100 psig)

Electricity:	95 – 220 Volts AC Max 70W

Options:

Hot Chute Atomiser (Doses atomised spray of LN2).
Soft Dose Technology (Reduce splash back in hot filled products and wide mouth cans).
Support Stand and Base.
Extended Vacuum Insulated Liquid Nitrogen Feed Hose.
Extended cabling to enable remote mounting of control panel.



www.peco-europe.com

